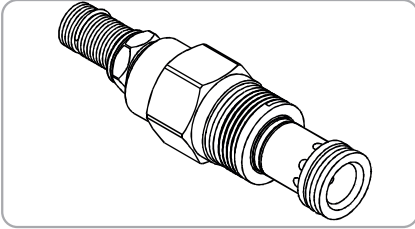
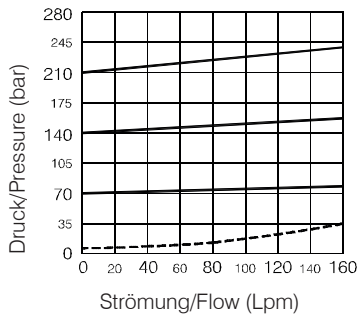


Kartusche Typ Sicherheitsventile - Wwrc Serie/Cartridge Type Relief Valves- Wwrc Series

WWRC- 02 Serie/Series



Leistung/Performance



Spezifikationen/Specifications

Model Nr./Model Number	Max Druck/Max. Pressure (bar)	Max.Ström./Max. Flow (lpm)	Gewicht/Weight (Kg)
WWRC-02	420(6092 psi)	100(26.42 gpm)	0.15 (0.33 lbs)
Flüssigkeitstyp/Fluid Type		ISO VG 32, 46, 68	
Viskosität cSt/Viscosity cSt		10~400 (59~1854 SSU)	
Betriebstemperatur/Operating Temperature		-15~70 (-5~158°F)	
Verschmutzungsgrad/Contamination Level		ISO4406.21/19/16 NAS1638,10	

Wie man bestellt/How To Order

1	2	3	4
WWRC	02	— *	— *

1 Ventil-Serie/Valve Series

WCK=Pilot betriebenen rückschlagventil kartusche
Cartridge Pilot Operated
Check Valves

4 Einstellbare Option/Adjustment Option

NONE	NONE:TOOL ADJUST	
K	K:HAND-BAR ADJUST	

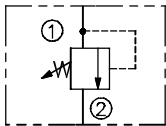
2 Größe der Montageplatte/Subplate Mounting Size

02 :T-10A Cavity :CST-10A

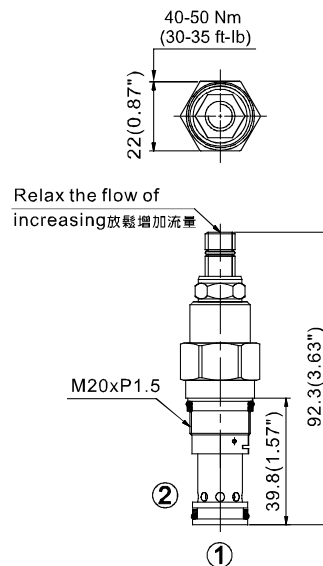
3 Einstellbare Druck/Adjustment Pressure

Order	Adjustment pressure
06	※ ~ 60 (bar)
10	※ ~ 100 (bar)
20	8 ~ 210 (bar)
40	12 ~ 420 (bar)

Steuerport (S)/Control Port (S)

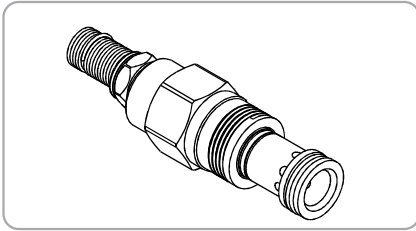


Maße/Dimensions

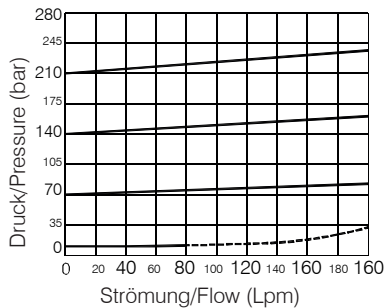


Kartusche Typ Sicherheitsventile - Wwrc Serie/Cartridge Type Relief Valves- Wwrc Series

WWRC- 03 Series



Leistung/Performance



Spezifikationen/Specifications

Model Nr./Model Number	Max Druck/Max. Pressure (bar)	Max.Ström./Max. Flow (lpm)	Gewicht/Weight (Kg)
WWRC-03	420(6092 psi)	200(52.83 gpm)	0.27 80.59 lbs)
Flüssigkeitstyp/Fluid Type		ISO VG 32, 46, 68	
Viskosität cSt/Viscosity cSt		10~400 (59~1854 SSU)	
Betriebstemperatur/Operating Temperature		-15~70 (-5~158°F)	
Verschmutzungsgrad/Contamination Level		ISO4406.21/19/16 NAS1638,10	

Wie man bestellt/How To Order

1
2
3
4
WWRC 03 — * — *

1 Ventil-Serie/Valve Series

WCK=Pilot betrieben rückschlagventil kartusche
Cartridge Pilot Operated
Check Valves

4

Einstellbare Option/Adjustment Option

NONE	NONE:TOOL ADJUST	
K	K:HAND-BAR ADJUST	

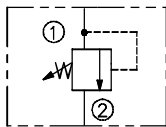
2 Größe der Montageplatte/Subplate Mounting Size

03 :T-3A Cavity :CST-3A

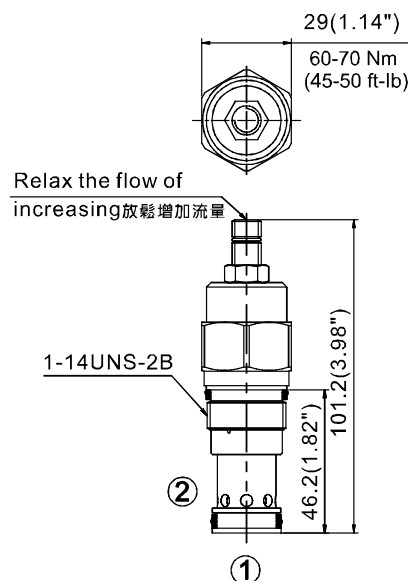
3 Einstellbare Druck/Adjustment Pressure

Order	Adjustment pressure
06	* ~ 60 (bar)
10	* ~ 100 (bar)
20	8 ~ 210 (bar)
30	8 ~ 315 (bar)
40	12 ~ 420 (bar)

Steuerport (S)/Control Port (S)

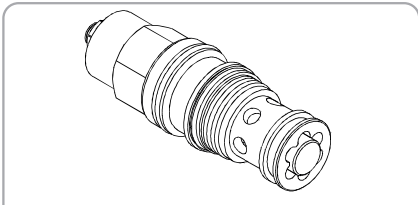


Maße/Dimensions

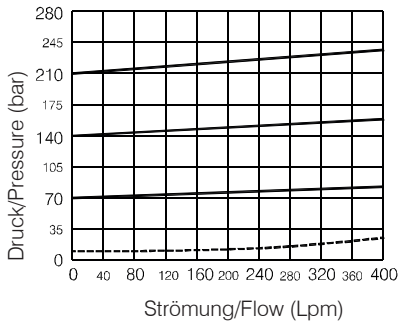


Kartusche Typ Sicherheitsventile - Wwrc Serie/Cartridge Type Relief Valves- Wwrc Series

WWRC- 06 Series



Leistung/Performance



Spezifikationen/Specifications

Model Nr./Model Number	Max Druck/Max. Pressure (bar)	Max.Ström./Max. Flow (lpm)	Gewicht/Weight (Kg)
WWRC-06	420(6092 psi)	380(100.39 gpm)	0.55 (1.21 lbs)
Flüssigkeitstyp/Fluid Type		ISO VG 32, 46, 68	
Viskosität cSt/Viscosity cSt		10~400 (59~1854 SSU)	
Betriebstemperatur/Operating Temperature		-15~70 (-5~158°F)	
Verschmutzungsgrad/Contamination Level		ISO4406.21/19/16 NAS1638,10	

Wie man bestellt/How To Order

1	2	3	4
WWRC	06	— * —	* — *

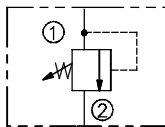
- 1 Ventil-Serie/Valve Series**
WCK=Pilot betrieben rückschlagventil kartusche
Cartridge Pilot Operated Check Valves
- 2 Größe der Montageplatte/Subplate Mounting Size**
06 :T-16A Cavity :CST-16A
- 4 Einstellbare Option/Adjustment Option**

NONE	NONE:TOOL ADJUST	
K	K:HAND-BAR ADJUST	

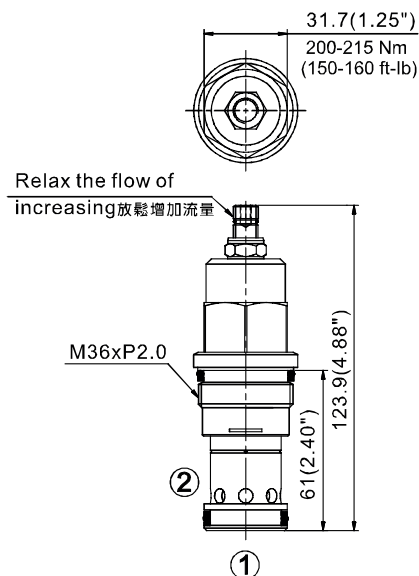
3 Einstellbare Druck/Adjustment Pressure

Order	Adjustment pressure
06	* ~ 60 (bar)
10	* ~ 100 (bar)
20	8 ~ 210 (bar)
40	12 ~ 420 (bar)

Steuer port (S)/Control Port (S)

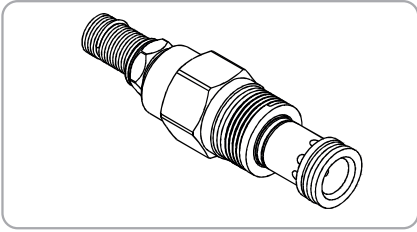


Maße/Dimensions

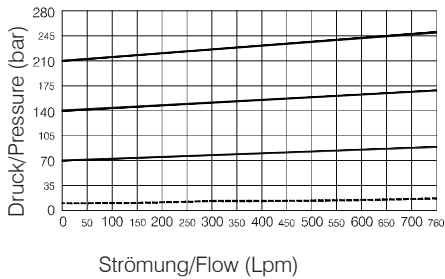


Kartusche Typ Sicherheitsventile - Wwrc Serie/Cartridge Type Relief Valves- Wwrc Series

WWRC- 10 Series



Leistung/Performance



Spezifikationen/Specifications

Model Nr./Model Number	Max Druck/Max. Pressure (bar)	Max.Ström./Max. Flow (lpm)	Gewicht/Weight (Kg)
WWRC-10	420(6092 psi)	760(200.77 gpm)	1.27 (2.80 lbs)
Flüssigkeitstyp/Fluid Type		ISO VG 32, 46, 68	
Viskosität cSt/Viscosity cSt		10~400 (59~1854 SSU)	
Betriebstemperatur/Operating Temperature		-15~70 (-5~158°F)	
Verschmutzungsgrad/Contamination Level		ISO4406.21/19/16 NAS1638,10	

Wie man bestellt/How To Order

1	2	3	4
WWC	10	* — *	* — *

1 Ventil-Serie/Valve Series
WCK = Pilot betrieben rückschlagventil kartusche
Cartridge Pilot Operated
Check Valves

2 Größe der Montageplatte/Subplate Mounting Size
10 : T-18A Cavity : CST-18A

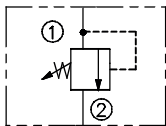
4 Einstellbare Option/Adjustment Option

NONE	NONE:TOOL ADJUST	
K	K:HAND-BAR ADJUST	

3 Einstellbare Druck/Adjustment Pressure

Order	Adjustment pressure
06	※ ~ 60 (bar)
10	※ ~ 100 (bar)
20	8 ~ 210 (bar)
40	12 ~ 420 (bar)

Steuerport (S)/Control Port (S)



Maße/Dimensions

